

# Technical data sheet

## Product features



### Rack conveyor dishwasher 160 racks/hour hot water, right exit

<b>Model</b>	<b>SAP Code</b>	00014491
CT 160 ABT RX	<b>A group of articles - web</b>	Tunel dishwashers



- To the product for free: 1x RM Clean+ 12 kg (00012271) and 1x RM Rinse+ 10 kg (00012273)
- Display type: ProSmart LED interface
- Number of programs: 4
- Number of skin: 2
- Maximal rack feed [racks/h]: 160
- Door clear height [mm]: 450
- Rack size [mm]: 500 x 500
- Water consumption of the washing cycle [l/basket]: 1,1 - 2,2
- Washing cycle time [s/basket]: 22 - 60
- Detergent and rinse pump system: ProDose - accurate dosing with a peristaltic pump
- Wash pump type: two-way - DuoFlow
- Detergent dispenser: Yes
- Rinse aid dispenser: Yes

<b>SAP Code</b>	00014491	<b>Boiler power [kW]</b>	10.500
<b>Net Width [mm]</b>	1150	<b>Basin volume [l]</b>	70
<b>Net Depth [mm]</b>	770	<b>Tank power [kW]</b>	9.500
<b>Net Height [mm]</b>	1588	<b>Water consumption of the washing cycle [l/basket]</b>	1,1 - 2,2
<b>Net Weight [kg]</b>	192.00	<b>Washing cycle time [s/basket]</b>	22 - 60
<b>Power electric [kW]</b>	22.200	<b>Maximal rack feed [racks/h]</b>	160
<b>Loading</b>	400 V / 3N - 50 Hz	<b>Door clear height [mm]</b>	450
<b>Boiler capacity [ l ]</b>	17.00	<b>Rack size [mm]</b>	500 x 500

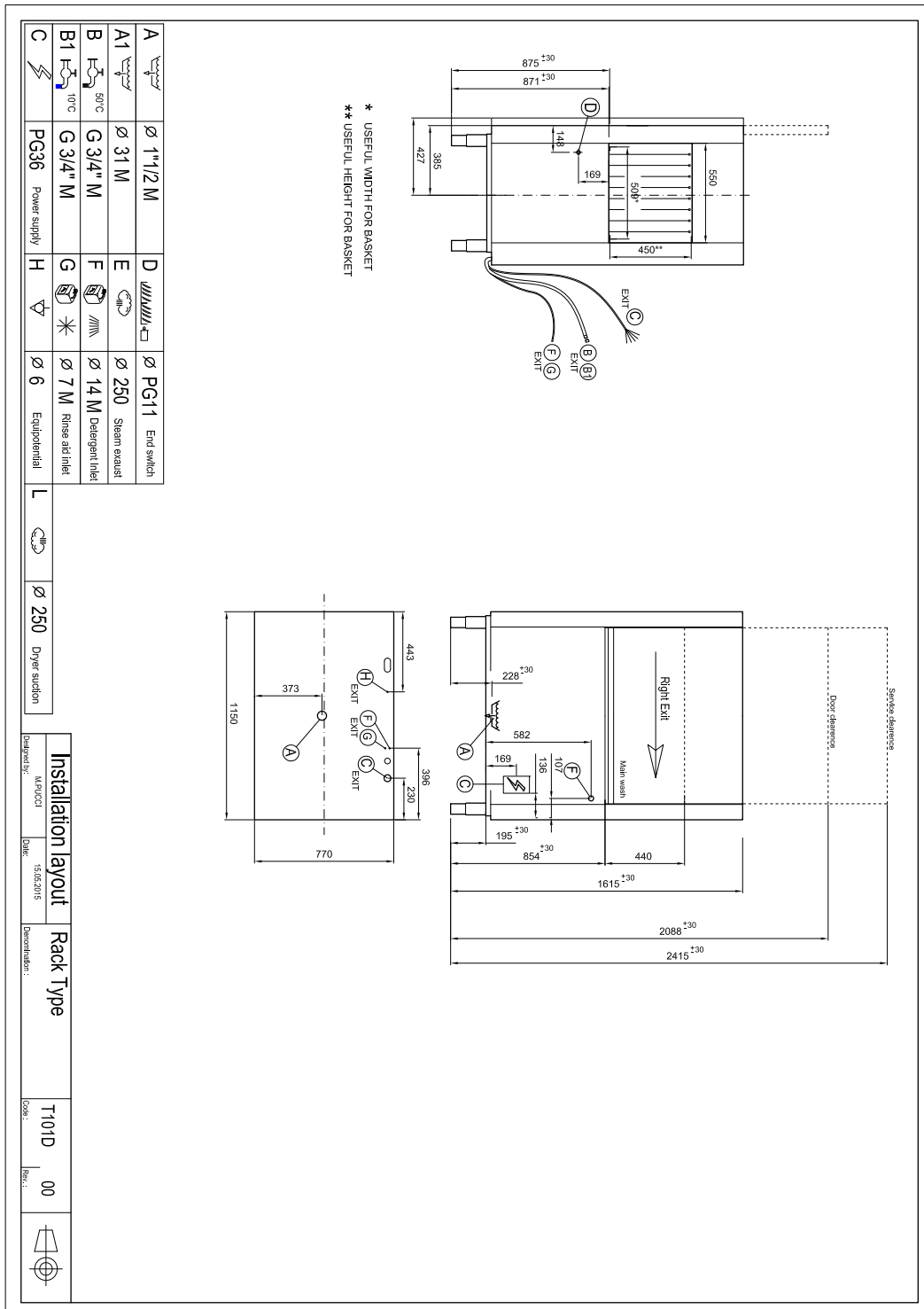
# Technical data sheet

Technical drawing



## Rack conveyor dishwasher 160 racks/hour hot water, right exit

<b>Model</b>	<b>SAP Code</b>	00014491
<b>CT 160 ABT RX</b>	<b>A group of articles - web</b>	Tunel dishwashers



# Technical data sheet

## Product benefits



### Rack conveyor dishwasher 160 racks/hour hot water, right exit

<b>Model</b>	<b>SAP Code</b>	00014491
CT 160 ABT RX	<b>A group of articles - web</b>	Tunel dishwashers

**1** **Stainless steel outer shell construction**  
round construction with stainless steel, rounded edges, Deep-drawn bathtub

- easy cleaning, high hygiene standard, long service life

**2** **LED Display**  
proScreen 4 local display + 2 LED strips

- easy control of the dishwasher operation
- continuous information on the status of the wash cycle
- diagnostics in the event of a fault

**3** **Detergent dispensers**  
two detergent and rinse aid dispensers

- precise chemical dosing by ProDose - precise dosing system for detergent and rinse aid by peristaltic pump setting of values via control panel

**4** **Double filter system**  
the chamber filter and the waste filter together with the ArchiMedes system provide a discharge system with increased water purification efficiency

- higher washing efficiency; longer life of the washing bath

**5** **Energy saving**  
Energy Saving energy saving system due to lowering the temperature of the boiler

- cost saving

**6** **Possibility of recovery**  
saving up to 40% of boiler energy  
improves the comfort environment of the workplace environment without steam  
saves water

- saving on energy and water costs; environmentally friendly system; safe system; pleasant workplace

**7** **Fast heating**  
Performance management allows the current running of the boiler and basins body

- quick first warm-up of the dishwasher
- smooth operation

**8** **Air break tank**  
the open system of the boiler rinse, in cooperation with the rinse pump, ensures a constant pressure and temperature of the rinse

- possibility to use in HACCP systems water temperature suitable for sterilization

**9** **Sliding system**  
a sliding system that moves the baskets through individual washing zones, the possibility to connect the drive to automatic tables

- quick distribution of dirty dishes

# Technical data sheet

Technical parameters



## Rack conveyor dishwasher 160 racks/hour hot water, right exit

<b>Model</b>	<b>SAP Code</b>	00014491
CT 160 ABT RX	<b>A group of articles - web</b>	Tunel dishwashers

**1. SAP Code:**

00014491

**2. Net Width [mm]:**

1150

**3. Net Depth [mm]:**

770

**4. Net Height [mm]:**

1588

**5. Net Weight [kg]:**

192.00

**6. Gross Width [mm]:**

1280

**7. Gross depth [mm]:**

920

**8. Gross Height [mm]:**

1800

**9. Gross Weight [kg]:**

218.00

**10. Device type:**

Electric unit

**11. Control type:**

Digital

**12. Material:**

AISI 304

**13. Power electric [kW]:**

22.200

**14. Loading:**

400 V / 3N - 50 Hz

**15. Number of programs:**

4

**16. Opening of device:**

Retractable up

**17. Door clear height [mm]:**

450

**18. Inlet pressure [bar]:**

1-4

**19. Adjustable feet:**

Yes

**20. Number of skin:**

2

**21. Modular construction:**

Yes

**22. Pre-wash module:**

No

**23. Maximal rack feed [racks/h]:**

160

**24. Self-cleaning cycle:**

No

**25. Boiler capacity [ l ]:**

17.00

**26. Boiler power [kW]:**

10.500

**27. Basin volume [l]:**

70

**28. Tank power [kW]:**

9.500

# Technical data sheet

## Technical parameters



### Rack conveyor dishwasher 160 racks/hour hot water, right exit

<b>Model</b>	<b>SAP Code</b>	00014491
CT 160 ABT RX	<b>A group of articles - web</b>	Tunel dishwashers

**29. Number of washing arms:**

3

**30. Number of rinsing arms:**

2

**31. Washing arm type:**

Firm

**32. Washing arm material:**

Stainless steel

**33. Atmospheric boiler with rinse pump:**

Yes

**34. Rinsing arm type:**

Firm

**35. Rinsing arm material:**

Stainless steel

**36. Deep drawn tank:**

Yes

**37. Rack support:**

welded

**38. Tank surface strainers:**

stainless steel

**39. Boiler thermostat adjust:**

Yes

**40. Rack feed capacity:**

60-80-120-160

**41. Detergent and rinse pump system:**

ProDose - accurate dosing with a peristaltic pump

**42. Hot water electric valve:**

Yes

**43. Rack size [mm]:**

500 x 500

**44. Min supply water temperature [°C]:**

45

**45. Max supply water temperature [°C]:**

60

**46. Display type:**

ProSmart LED interface

**47. USB port:**

Yes, for Firmware actualisation

**48. Self-diagnostics:**

Yes

**49. Double rinse:**

No

**50. Wash pump type:**

two-way - DuoFlow

**51. Detergent dispenser:**

Yes

**52. Rinse aid dispenser:**

Yes

**53. Water consumption of the washing cycle [l/basket]:**

1,1 - 2,2

**54. Washing cycle time [s/basket]:**

22 - 60

**55. Rinse water temperature [°C]:**

82

**56. Standard equipment for device:**

1x glass basket, 1x plate basket, 1x cutlery basket

# Technical data sheet

Technical parameters



Rack conveyor dishwasher 160 racks/hour hot water, right exit

<b>Model</b>	<b>SAP Code</b>	00014491
CT 160 ABT RX	<b>A group of articles - web</b>	Tunel dishwashers

**57. Program ProSpeed:**

No

**58. Program ProFessional:**

No

**59. Program ProFessional 2:**

No

**60. Program ProFessional 4:**

No

**61. Program ProFessional 6:**

No

**62. Program ProFessional 8:**

No

**63. Program ProFessional 10:**

No

**64. Program ProTemp:**

No

**65. Program ProSelf:**

No

**66. Program ProClean:**

No

**67. Program ProDrain:**

No

**68. Program ProEco:**

No

**69. Program ProNew:**

No

**70. Program ProLong:**

No

**71. Program ProGlass:**

No

**72. Program ProPlates:**

No

**73. Program ProCold:**

No

**74. Program ProWater:**

No

**75. Program ProActive:**

No

**76. Program ProActive 5:**

No

**77. Program ProActive 7:**

No

**78. Program ProSteel:**

No

**79. Program ProSan:**

No

**80. Program High Capacity:**

Yes

**81. Program General purpose:**

Yes

**82. Program Prolonged contact (DIN 10534):**

Yes

**83. Program Glasses:**

Yes

**84. Cross-section of conductors CU [mm<sup>2</sup>]:**

10

# Technical data sheet

Technical parameters



## Rack conveyor dishwasher 160 racks/hour hot water, right exit

<b>Model</b>	<b>SAP Code</b>	00014491
CT 160 ABT RX	<b>A group of articles - web</b>	Tunel dishwashers

### 85. Water supply connection:

3/4"

### 86. Diameter nominal:

DN 50